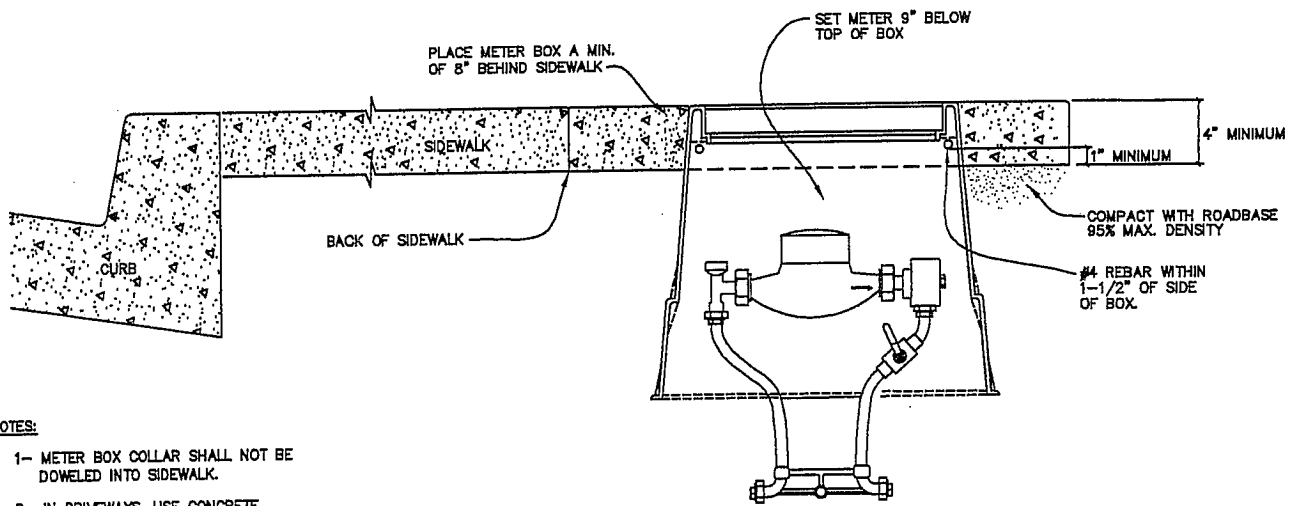


PLAN VIEW



SECTION

NOTES:

- 1- METER BOX COLLAR SHALL NOT BE DOWELED INTO SIDEWALK.
- 2- IN DRIVEWAYS, USE CONCRETE BOX WITH CAST IRON LID.

CITY OF ST. GEORGE ENGINEERING DEPARTMENT

WATER METER BOX
DETAILS

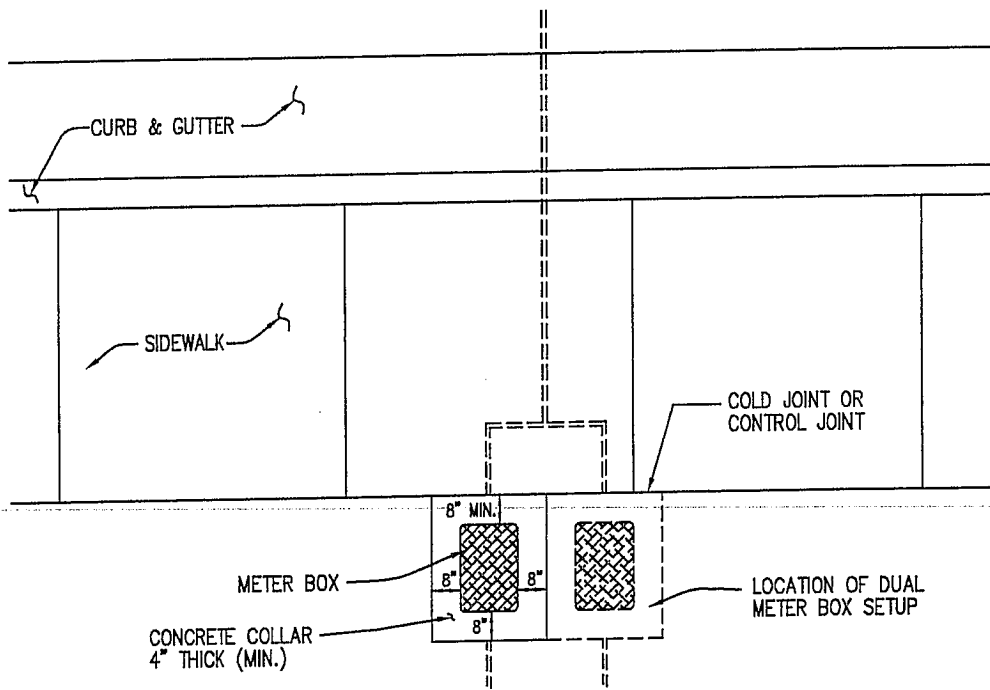
STANDARD DWG. NO.

300 | 1 OF 1

APPROVED:

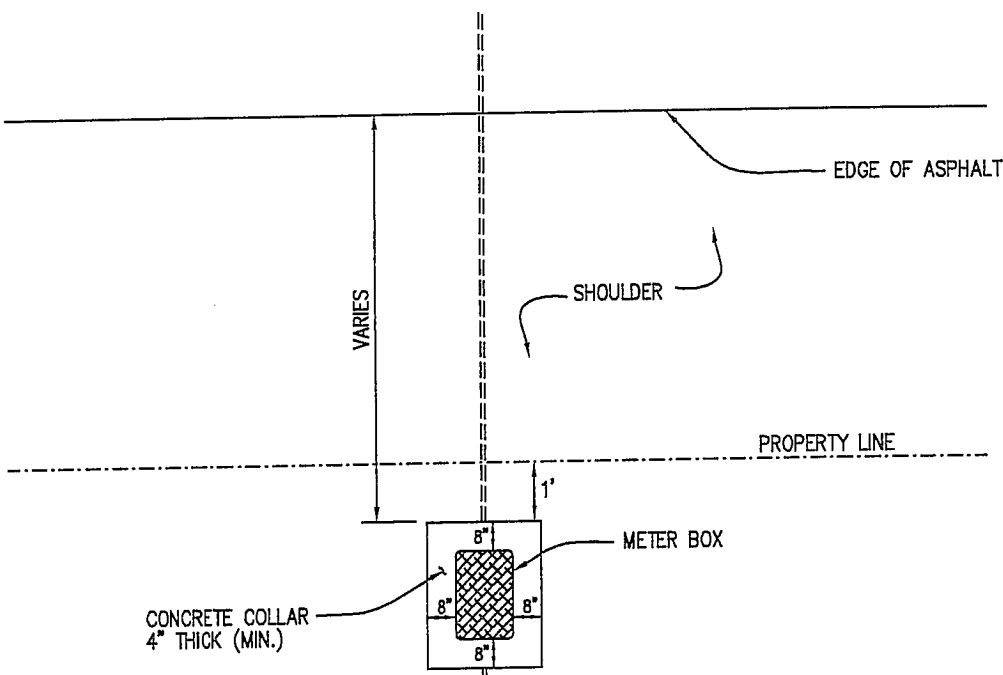
DATE: | BY: LBB

| REVISIONS | | |
|-----------|-------------|----|
| DATE | DESCRIPTION | BY |
| | | |
| | | |
| | | |



**PLAN VIEW
W/SIDEWALK**

NOTES:
1- DO NOT DOWEL METER BOX
COLLAR INTO SIDEWALK.



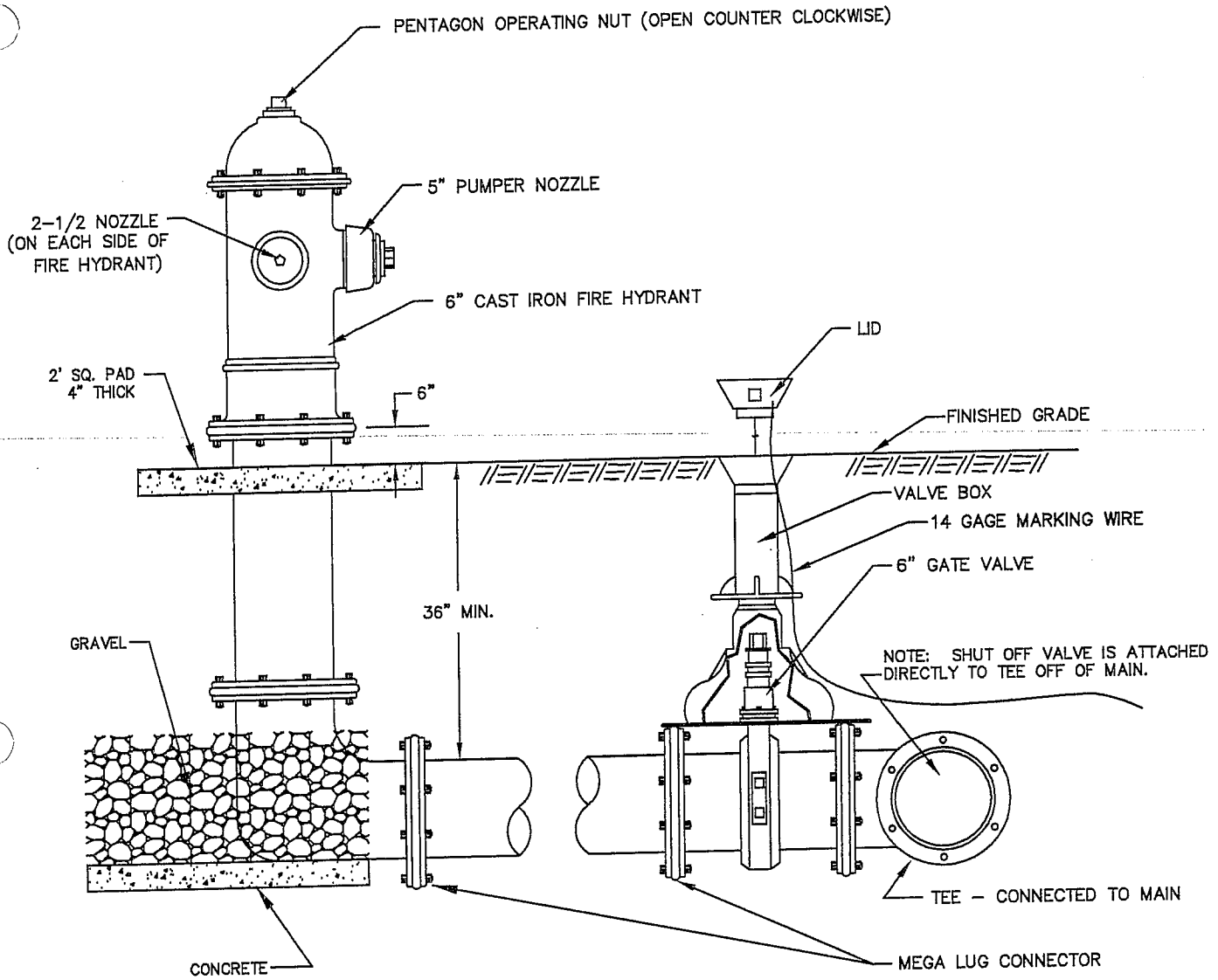
**PLAN VIEW
NO SIDEWALK**

CITY OF ST. GEORGE ENGINEERING DEPARTMENT

| REVISIONS | | |
|-----------|-------------|----|
| DATE | DESCRIPTION | BY |
| | | |
| | | |
| | | |

**WATER METER BOX LOCATION
DETAILS**

| | |
|-------------------|---------|
| STANDARD DWG. NO. | |
| 301 | 1 OF 1 |
| APPROVED: | |
| DATE: | BY: LBB |



NOTES:

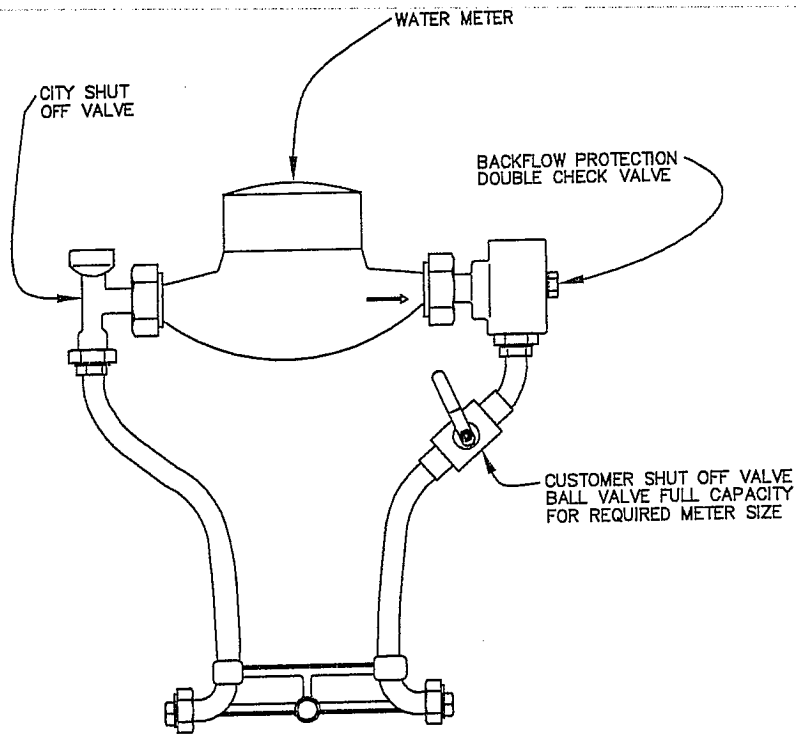
- 1- IN GENERAL, HYDRANTS SHALL BE PLACED A MINIMUM OF 1' BEHIND SIDEWALK. WHERE A PLANTER STRIP IS USED, HYDRANT MAY BE PLACED IN CENTER PROVIDED WIDTH OF PLANTER IS 4' OR GREATER.

CITY OF ST. GEORGE ENGINEERING DEPARTMENT

| REVISIONS | | |
|-----------|-------------|----|
| DATE | DESCRIPTION | BY |
| | | |
| | | |
| | | |

STANDARD FIRE HYDRANT
DETAILS

| | |
|-------------------|---------|
| STANDARD DWG. NO. | |
| 302 | 1 OF 1 |
| APPROVED: | |
| DATE: | BY: LBB |

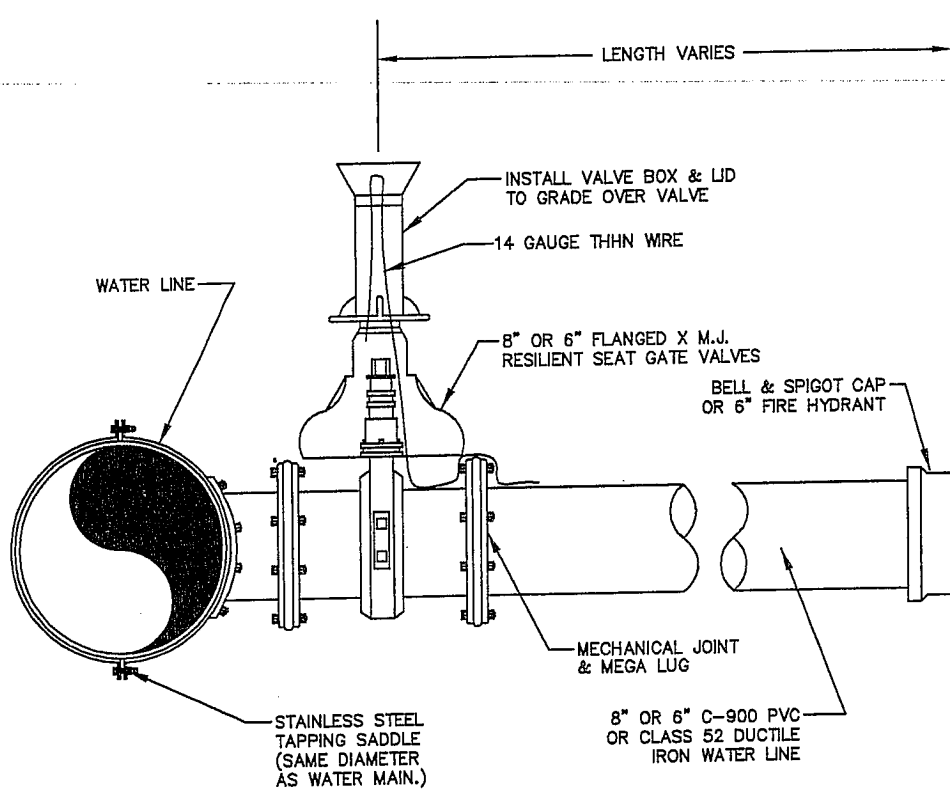


CITY OF ST. GEORGE ENGINEERING DEPARTMENT

| REVISIONS | | |
|-----------|-------------|----|
| DATE | DESCRIPTION | BY |
| | | |
| | | |
| | | |

**WATER METER SETTER
DETAILS**

| | |
|-------------------|---------|
| STANDARD DWG. NO. | |
| 303 | 1 OF 1 |
| APPROVED: | |
| DATE: | BY: LBB |

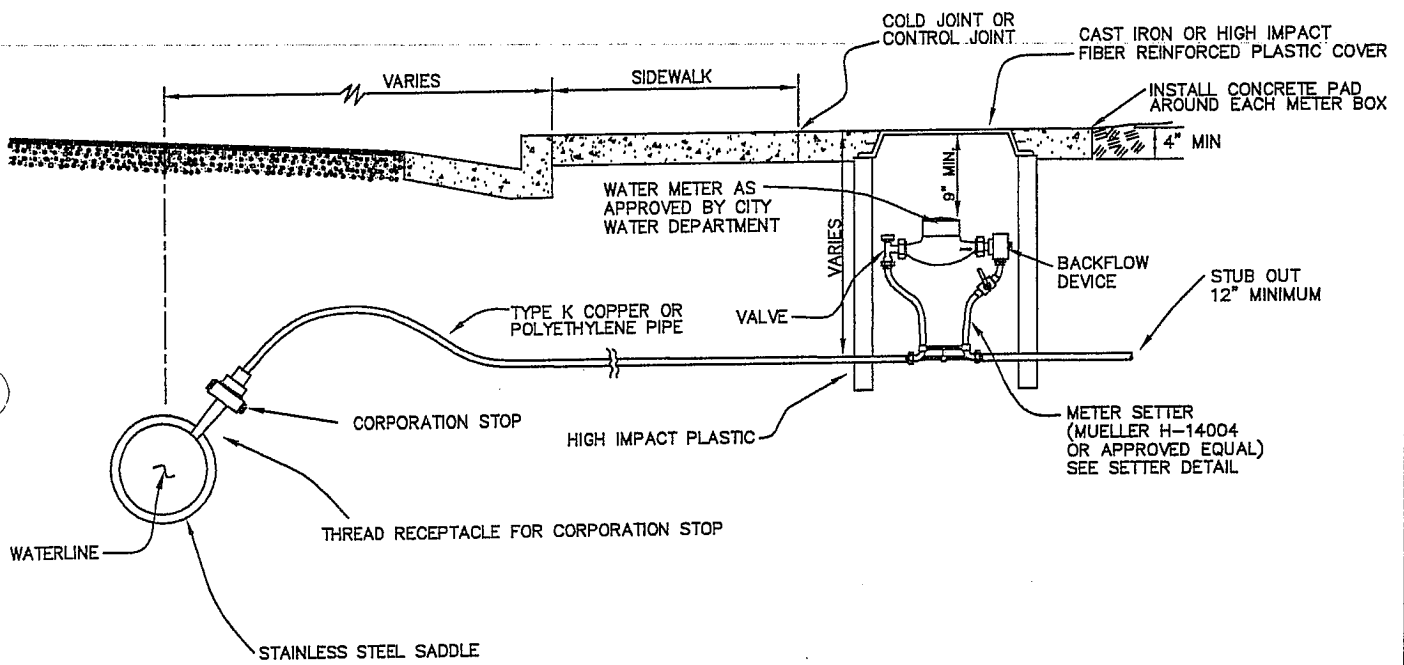


CITY OF ST. GEORGE ENGINEERING DEPARTMENT

| REVISIONS | | |
|-----------|-------------|----|
| DATE | DESCRIPTION | BY |
| | | |
| | | |
| | | |

**8" OR 6" WATER LATERAL
(CONNECTION TO EXISTING LINE)**

| | |
|-------------------|---------|
| STANDARD DWG. NO. | |
| 304 | 1 OF 1 |
| APPROVED: | |
| DATE: | BY: LBB |



NOTES:
 1- ALL TRENCH EXCAVATION AND COMPACTION SHALL BE IN ACCORDANCE WITH STANDARD SPECIFICATIONS.

CITY OF ST. GEORGE ENGINEERING DEPARTMENT

**3/4" WATER SERVICE CONNECTION
& METER**

STANDARD DWG. NO.

305 | 1 OF 1

APPROVED:

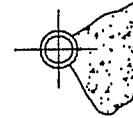
DATE:

BY: LBB

| REVISIONS | | |
|-----------|-------------|----|
| DATE | DESCRIPTION | BY |
| | | |
| | | |
| | | |

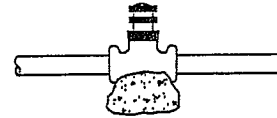
| THRUST BLOCK BEARING AREA IN SQUARE FEET | | | | | | | | |
|------------------------------------------|-----------|------|------|------|------|------|------|------|
| PIPE SIZE | CONDITION | | | | | | | |
| | I | II | III | IV | V | VI | VII | VIII |
| 4" | 2.6 | 3.3 | 2.6 | 1.3 | 1.3 | 2.0 | 3.3 | 2.6 |
| 6" | 4.6 | 6.5 | 3.9 | 2.0 | 2.6 | 3.3 | 6.5 | 4.6 |
| 8" | 7.8 | 11.0 | 5.9 | 3.3 | 3.9 | 5.9 | 11.0 | 7.8 |
| 10" | 12.4 | 17.5 | 9.8 | 5.2 | 6.5 | 9.1 | 17.5 | 12.4 |
| 12" | 17.5 | 24.8 | 13.6 | 7.8 | 9.1 | 12.3 | 24.8 | 17.5 |
| 14" | 24.0 | 33.8 | 18.2 | 9.7 | 12.3 | 16.9 | 33.8 | 24.0 |
| 16" | 31.1 | 44.0 | 23.8 | 12.7 | 15.5 | 23.2 | 44.0 | 31.1 |

1. CALCULATED ON 225 LB. TEST PRESSURE & ALLOWABLE BEARING PRESSURE OF 2000 LBS. PER SQUARE FOOT.
2. IN POOR SOILS SPECIAL DESIGN IS REQUIRED.
3. CONCRETE SHALL BE CLASS "C" OR BETTER.
4. ALL THRUST BLOCK BEARING FACES SHALL BE POURED AGAINST UNDISTURBED SOIL OR APPROVED COMPACTED BACKFILL.
5. PRIOR APPROVAL FROM THE WATER DEPARTMENT REQUIRED FOR USE OF CONCRETE THRUST BLOCKS.

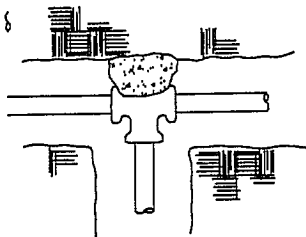


TYPICAL SECTION THRU THRUST BLOCKS

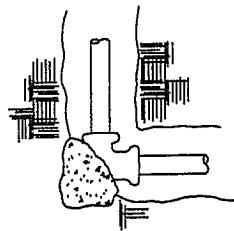
VALVE ANCHOR REQUIRED FOR VALVES 12" OR LARGER



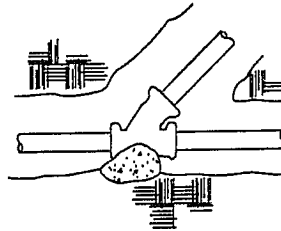
THRUST BLOCKING



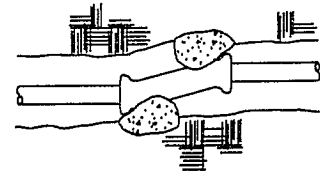
CONDITION I



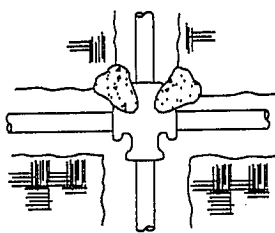
CONDITION II



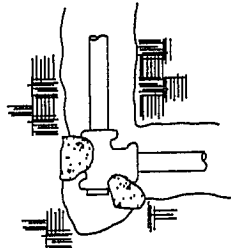
CONDITION III



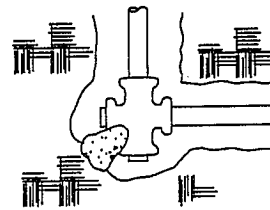
CONDITION IV



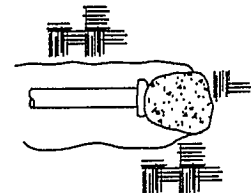
CONDITION V



CONDITION VI



CONDITION VII



CONDITION VIII

CITY OF ST. GEORGE ENGINEERING DEPARTMENT

| REVISIONS | | |
|-----------|-------------|----|
| DATE | DESCRIPTION | BY |
| | | |
| | | |

WATER LINE THRUST BLOCK DETAILS

| | |
|-------------------|---------|
| STANDARD DWG. NO. | |
| 306 | 1 OF 1 |
| APPROVED: | |
| DATE: | BY: LBB |