

1. ALL JOINTS WITHIN LENGTH "L" MUST BE RESTRAINED. USE RETAINER GLAND AT MECHANICAL JOINTS AND HARNESS WITH PUSH-ON PIPE PER CITY SPECIFICATION.
2. FOR TEST PRESSURES AND LAYING CONDITIONS SEE SECTION ON GENERAL NOTES FOR USE OF RESTRAINED JOINT LENGTHS.

PIPE SIZE IN INCHES

4	6	8	10	12	14	16	18	20
44	62	82	99	118	135	153	169	187

RESTRAINED LENGTHS, "L" (IN FEET)

RESTRAINED JOINT LENGTHS USAGE GENERAL NOTES

RESTRAINED LENGTH CALCULATIONS ARE BASED ON THE FOLLOWING DESIGN TYPICALLY USED WITH BACKFILL IN ST. GEORGE.

1. THREE (3) FEET MINIMUM DEPTH OF COVER.
2. A SAFTEY FACTOR OF 1.5
3. SOIL TYPE SANDY CLAY
4. TYPE 5 TRENCH COMPACTION FROM FOUR (4) INCHES MINIMUM UNDER THE PIPE TO THE CENTER LINE OF THE PIPE, AND COMPACTED GRANULAR OR SELECTED MATERIAL FROM THE CENTER LINE OF THE PIPE TO THE TOP OF THE PIPE (90 PERCENT STANDARD PROCTOR DENSITY, AASHTO T-99).
5. 200 PSI TEST PRESSURES FOR FOUR (4) THROUGH SIXTEEN (16) INCH SIZE PIPES.

IF ACTUAL CONDITIONS DIFFER FROM THOSE LISTED ABOVE OR THE REQUIRED RESTRAINED LENGTH CANNOT BE MET, THE RESTRAINED JOINT LENGTH SHALL BE DETERMINED BY THE WATER AND POWER ENGINEER.

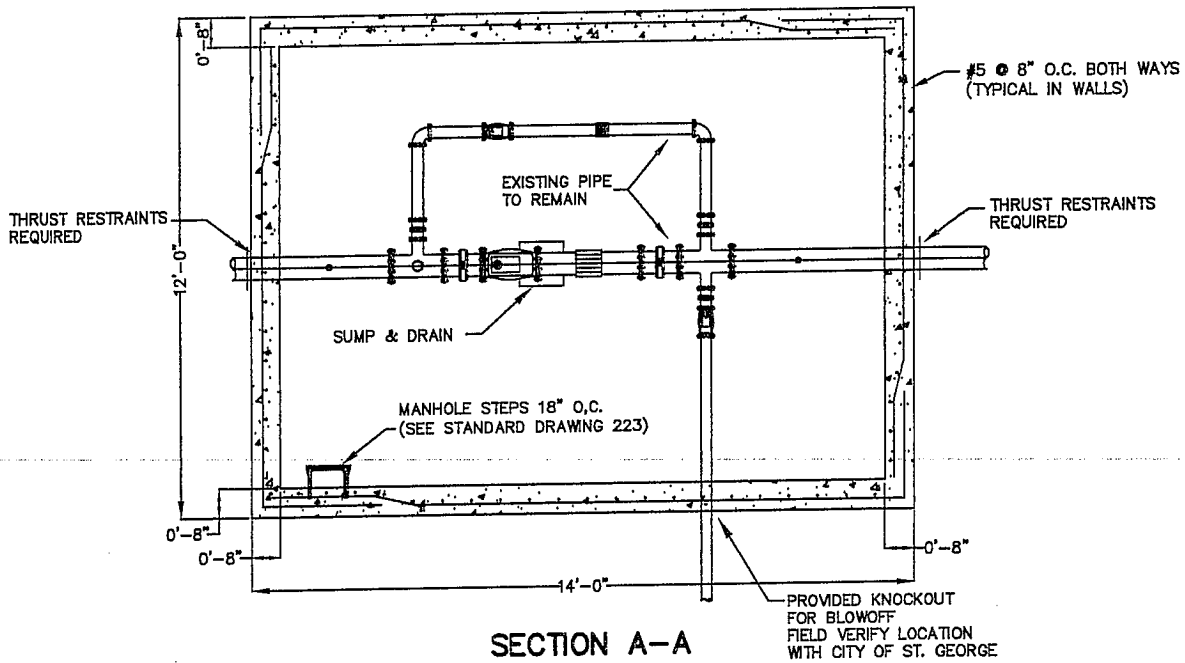
CITY OF ST. GEORGE ENGINEERING DEPARTMENT

STANDARD DWG. NO.

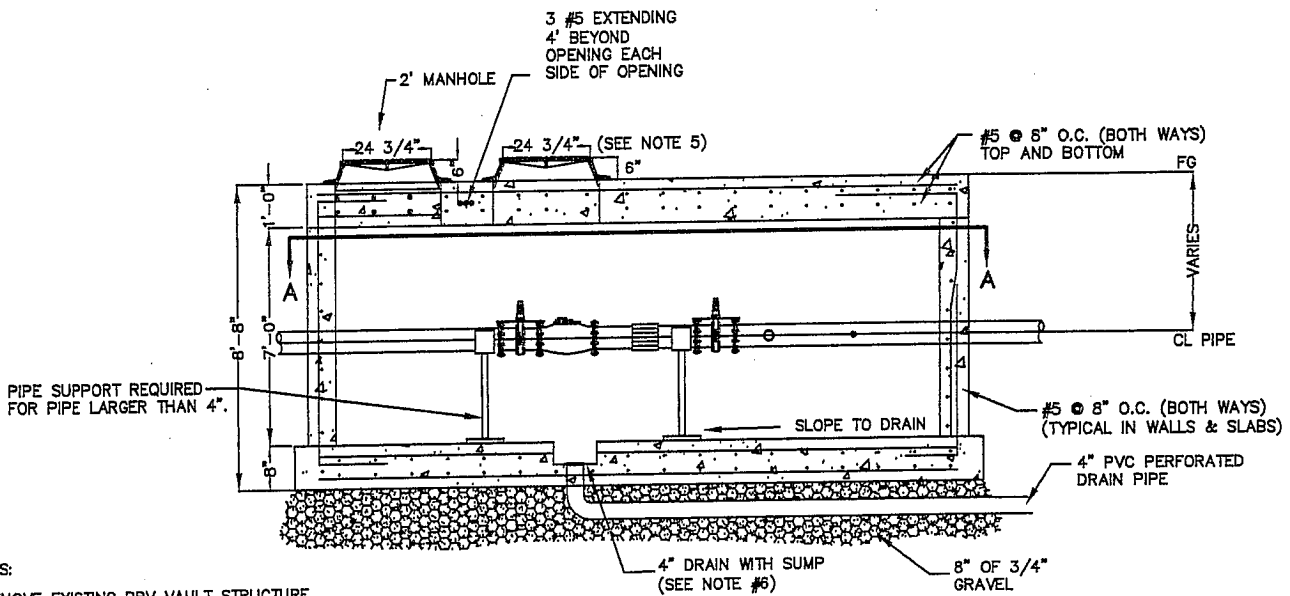
REVISIONS		
DATE	DESCRIPTION	BY

IN LINE VALVE\DEAD END ON PVC PIPE
DETAIL

312	1 OF 1
APPROVED:	
DATE:	BY: LBB



SECTION A-A



SIDE VIEW

NOTES:

1. REMOVE EXISTING PRV VAULT STRUCTURE.
2. FIELD VERIFY EXISTING PIPING CONFIGURATION & SIZES TO DETERMINE KNOCKOUT AND MANHOLE LOCATIONS.
3. IF VAULT IS IN SIDEWALK THE FINISH GRADE OF TOP OF VAULT SHALL MATCH SLOPE OF EXISTING SIDEWALK.
4. IF VAULT IS IN ROADWAY, FINISH GRADE OF TOP OF VAULT SHALL MATCH SUBGRADE.
5. MANHOLE RING & LID WILL VARY WITH SIZE OF P.R.V. CONTACT WATER DEPARTMENT.
6. SUMP SIZE SHALL BE 12" X 12" X 4" DEEP.

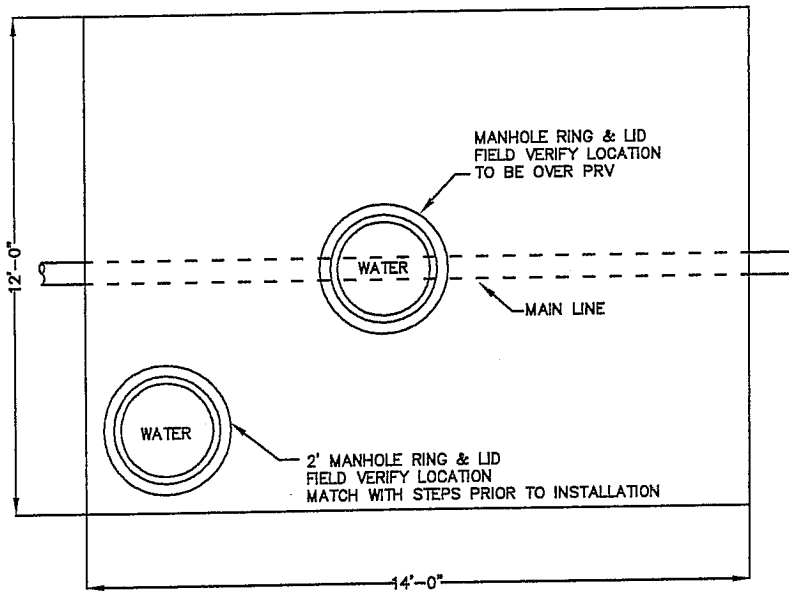
CITY OF ST. GEORGE ENGINEERING DEPARTMENT

STANDARD PRESSURE REDUCING VALVE
FOR EXISTING PRV & PIPING

STANDARD DWG. NO.
314 1 OF 2

APPROVED:
DATE: BY: GM

REVISIONS		
DATE	DESCRIPTION	BY



TOP VIEW LID

NOTES:

1. SIZE OF MANHOLE RING & LID WILL VARY WITH SIZE OF PRV. (CONTACT WATER DEPARTMENT).

CITY OF ST. GEORGE ENGINEERING DEPARTMENT

**STANDARD PRESSURE REDUCING VALVE
VAULT LID**

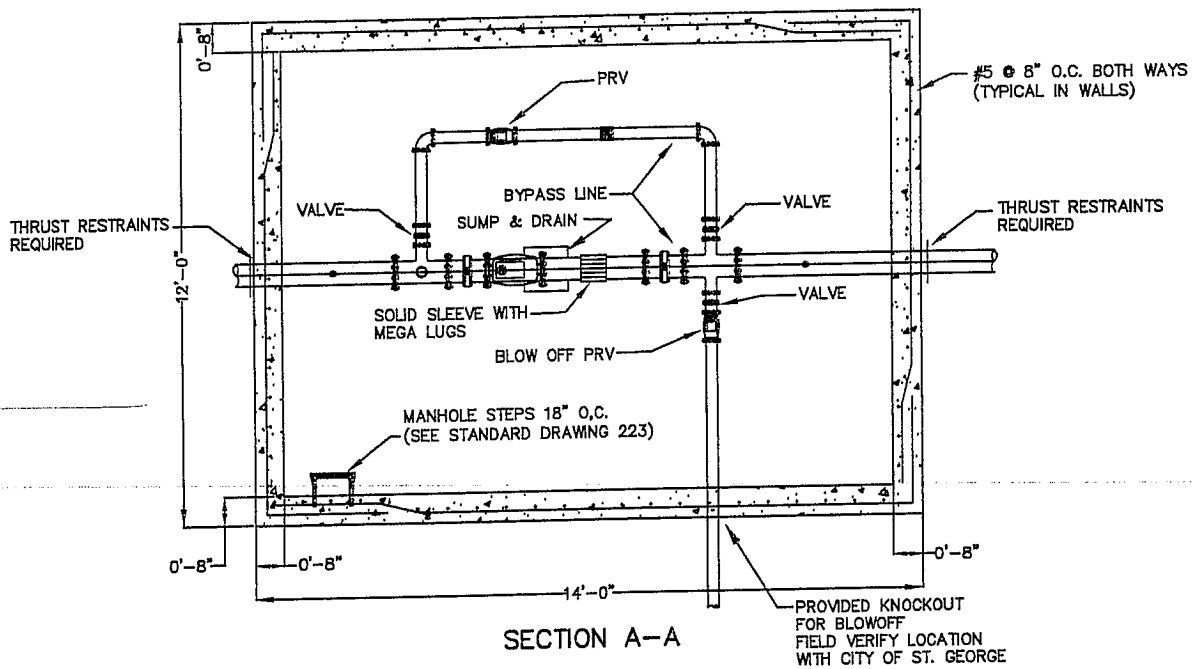
STANDARD DWG. NO.

314 | 2 OF 2

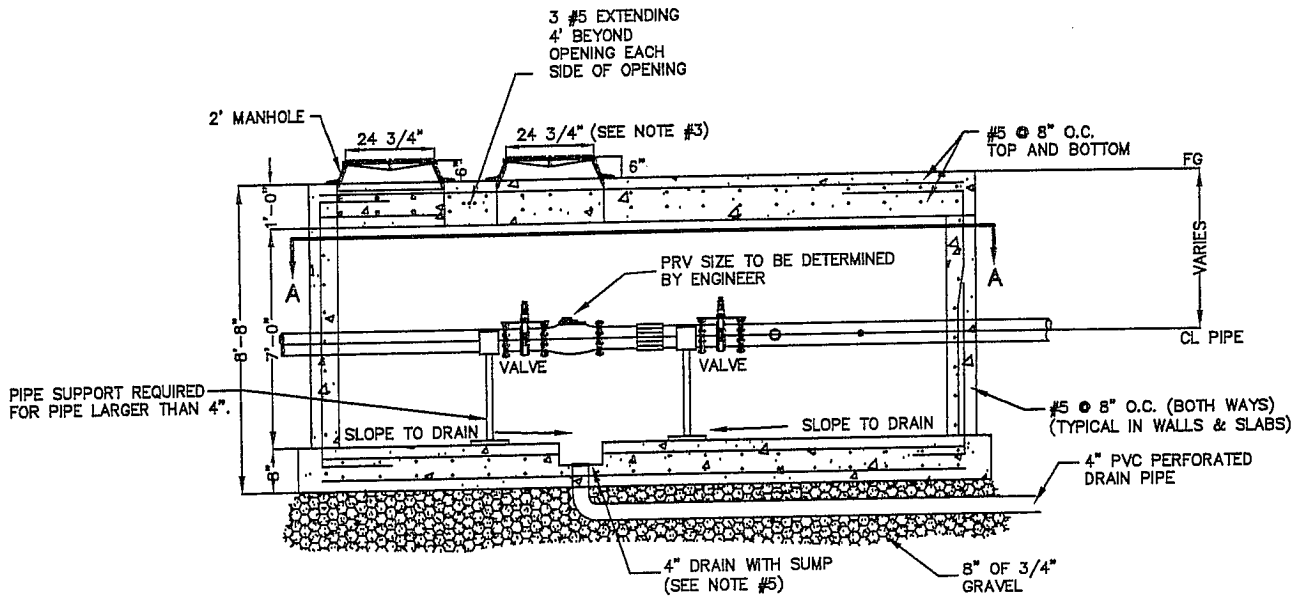
APPROVED:

DATE: | BY: GM

REVISIONS		
DATE	DESCRIPTION	BY



SECTION A-A



SIDE VIEW

NOTES:

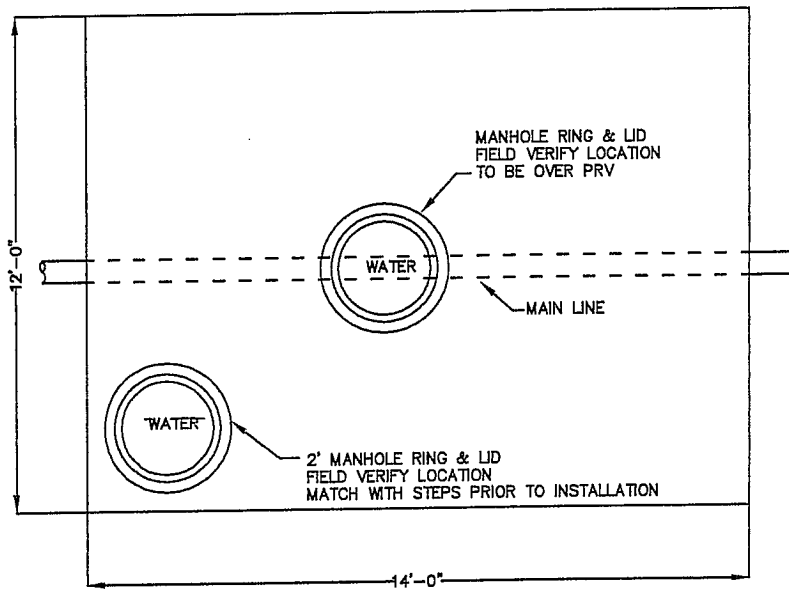
1. IF VAULT IS IN SIDEWALK THE FINISH GRADE OF TOP OF VAULT SHALL MATCH SLOPE OF EXISTING SIDEWALK.
2. ALL FITTINGS SHALL BE FLANGED AND MEGA LUGGED.
3. MANHOLE RING & LID WILL VARY WITH SIZE OF P.R.V. CONTACT WATER DEPARTMENT.
4. IF VAULT IS IN ROADWAY, FINISH GRADE OF TOP OF VAULT SHALL MATCH SUBGRADE.
5. SUMP SIZE SHALL BE 12" X 12" X 4" DEEP.

CITY OF ST. GEORGE ENGINEERING DEPARTMENT

REVISIONS		
DATE	DESCRIPTION	BY

**STANDARD PRESSURE REDUCING VALVE
& VALUT FOR NEW CONSTRUCTION**

STANDARD DWG. NO.	
315	1 OF 2
APPROVED:	
DATE:	BY: GM



TOP VIEW LID

NOTES:

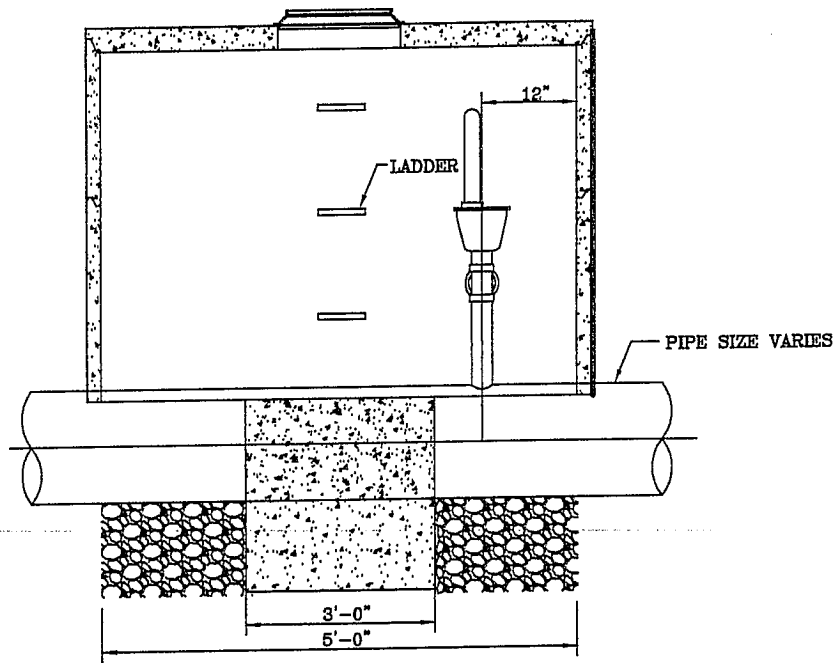
1. SIZE OF MANHOLE RING & LID WILL VARY WITH SIZE OF PRV. (CONTACT WATER DEPARTMENT).

CITY OF ST. GEORGE ENGINEERING DEPARTMENT

REVISIONS		
DATE	DESCRIPTION	BY

**STANDARD PRESSURE REDUCING VALVE
VAULT LID**

STANDARD DWG. NO.	
315	2 OF 2
APPROVED:	
DATE:	BY: GM

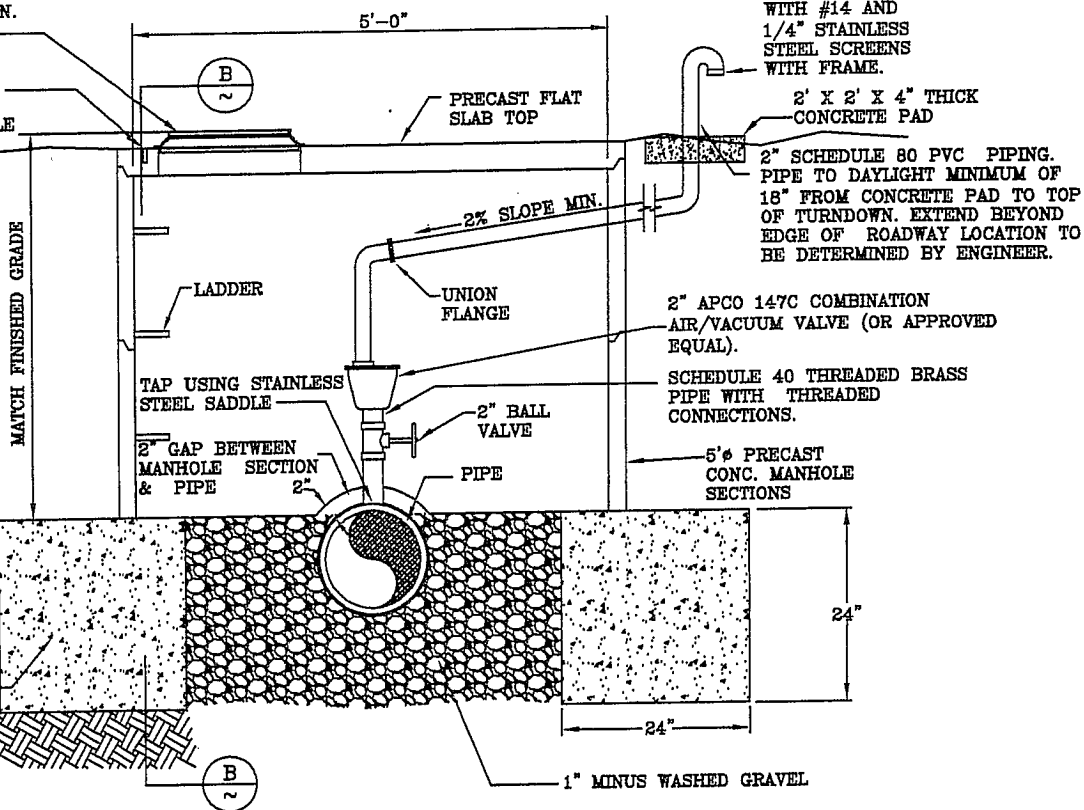


VENTED MANHOLE FRAME
& COVER W/24" LID
COMBINED
WEIGHT 360 LBS. MIN.
(HS-70 RATING)

SECTION B

CONTRACTOR TO DRILL
2-1" Ø HOLES 4" DEEP
FOR REMOVABLE HANDLE
TO BE USED FOR
MANHOLE ACCESS.

COVER TURNDOWN
WITH #14 AND
1/4" STAINLESS
STEEL SCREENS
WITH FRAME.



24"x24"x36" PRECAST
CONCRETE FOOTING

NOTE: ALL AIR VALVES
SHALL BE INSTALLED
VERTICALLY PLUMB

AIR VALVE SECTION
N.T.S.

CITY OF ST. GEORGE ENGINEERING DEPARTMENT

REVISIONS		
DATE	DESCRIPTION	BY

STANDARD AIR VAC DETAIL

STANDARD DWG. NO.	
316	1 OF 1
APPROVED:	
DATE:	BY: GM