

GENERAL NOTES

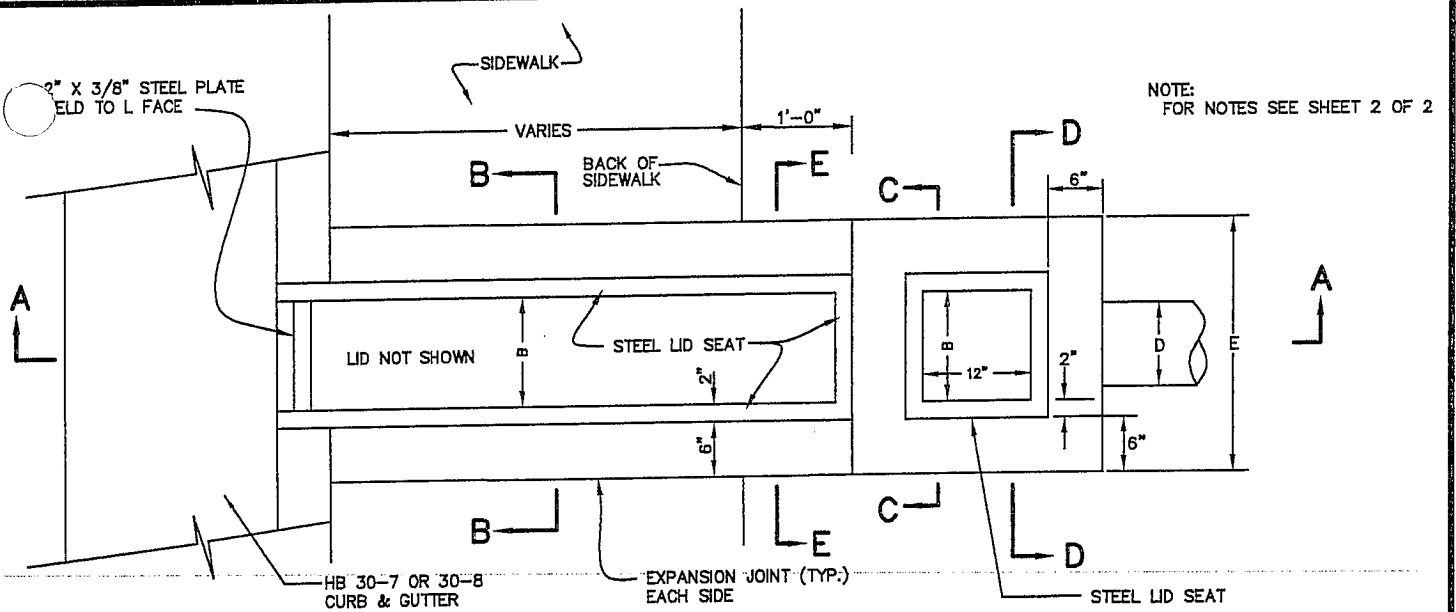
- 1- CROSS SLOPE SHALL BE 1/4 INCH RISE PER FOOT FROM TOP OF CURB (SLOPE NOT TO EXCEED 1/2 INCH RISE PER FOOT).
- 2- UNTREATED BASE COURSE SHALL BE PLACED UNDER SIDEWALK AND COMPACTED TO A MIN. OF 95%. THICKNESS OF UNTREATED BASE NOT LESS THAN 4 INCHES.
- 3- USE CLASS "A" CONCRETE ONLY (6 BAG, TYPE V CEMENT).
- 4- SIDEWALK SURFACE TO HAVE A MEDIUM BROOM FINISH.
- 5- SIDEWALKS IN COMMERCIAL ZONES SHALL BE A MIN. OF 7' WIDE WHERE DESIGNATED BY THE CITY.
- 6- WHERE SIDEWALKS CROSS DRIVEWAYS, MINIMUM THICKNESS SHALL BE AS FOLLOWS:
RESIDENTIAL: 6" FOR SIDEWALK, 6" FOR ROADBASE
COMMERCIAL/INDUSTRIAL: 8" FOR SIDEWALK, 8" FOR ROADBASE.
- 7- FIBER EXPANSION JOINTS SHALL BE PLACED AT BOTH ENDS OF DRIVEWAY
- 8- FIBER EXPANSION JOINTS SHALL ALSO BE PLACED BETWEEN DRIVEWAY AND BACK OF SIDEWALK.

SIDEWALK	ROAD TYPE				
	LOCAL	COLLECTOR	MAJOR COLLECTOR	ARTERIAL	MAJOR ARTERIAL
WIDTH	4'	5'	5'	5'+	6'+
SCORE JOINT SPACING	4'	5'	5'	5'+	6'+
EXPANSION JOINT SPACING	20'	20'	20'	20'	24'

REVISIONS		
DATE	DESCRIPTION	BY

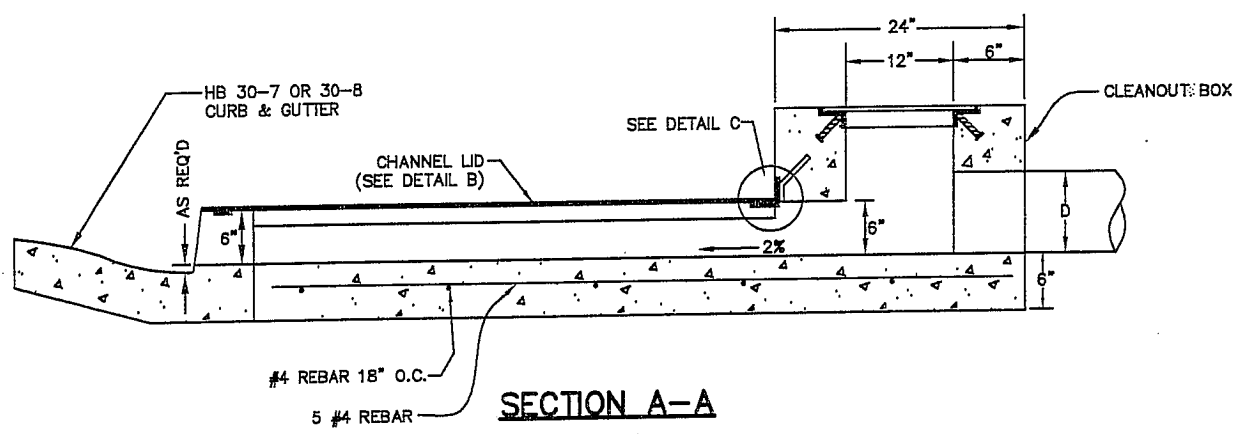
STANDARD SIDEWALK DETAILS

STANDARD DWG. NO.	
120	1 OF 1
APPROVED:	
DATE:	BY: LBB

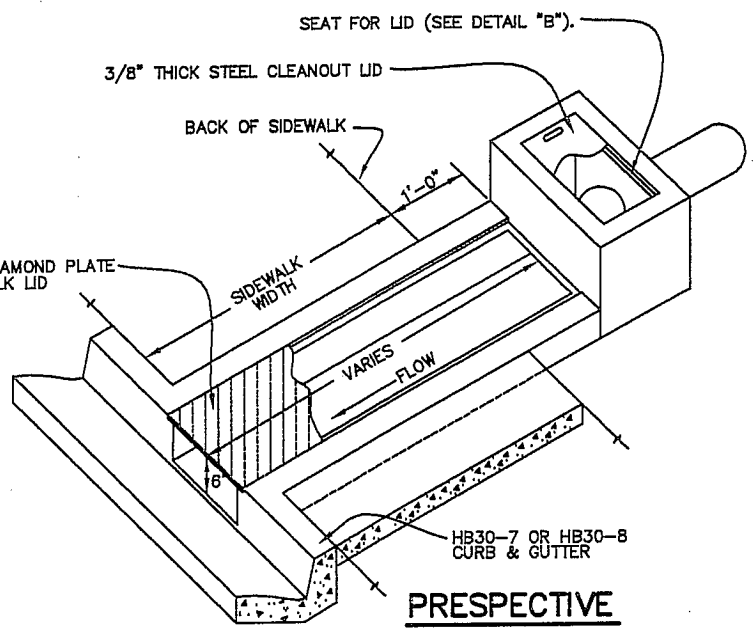


NOTE:
FOR NOTES SEE SHEET 2 OF 2

PLAN



SECTION A-A



PERSPECTIVE

MARK	DIMENSION (INCHES)				COMMENTS
B	10	15	20	30*	INSIDE WIDTH
C	20	22	24	27	CLEANOUT BOX HEIGHT
D	≤8	10	12	15	INLET PIPE
E	22	27	32	42	BOX WIDTH
K	18	23	28	38	STEEL END SUPPORT

DIMENSION TABLE

*REQUIRES ENGINEERED DESIGN FOR LID & BOX.

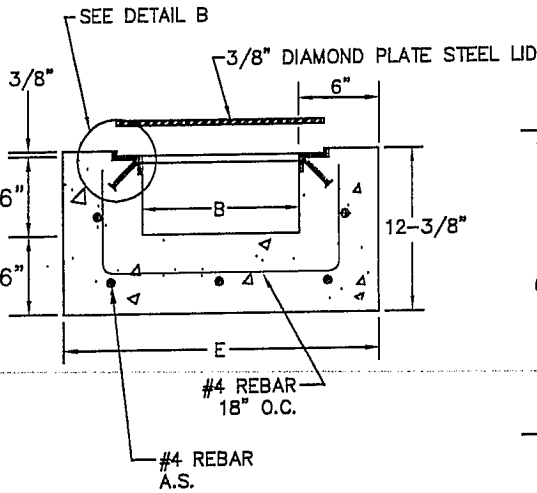
CITY OF ST. GEORGE ENGINEERING DEPARTMENT

SIDEWALK DRAINAGE STRUCTURE

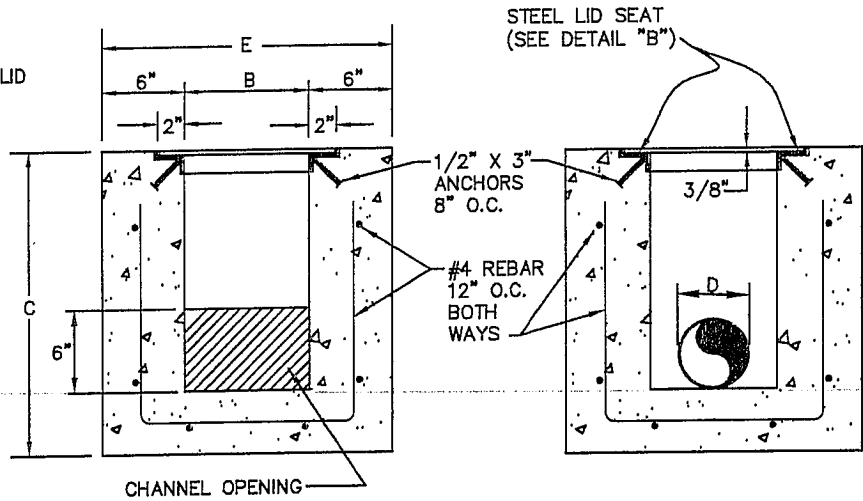
STANDARD DWG. NO.	
204	1 OF 2
APPROVED:	
DATE:	BY: LBB

REVISIONS		
DATE	DESCRIPTION	BY

NOTE:
STEEL LID TO BE FLUSH
WITH CONCRETE SIDEWALK.

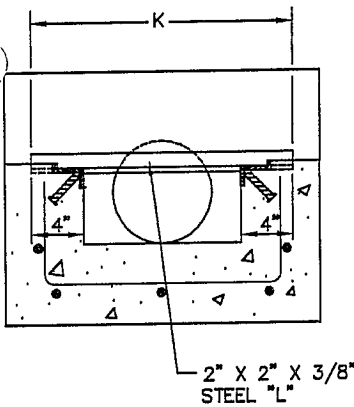


SECTION B-B

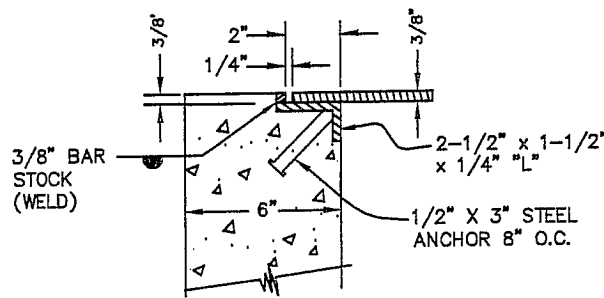


SECTION C-C

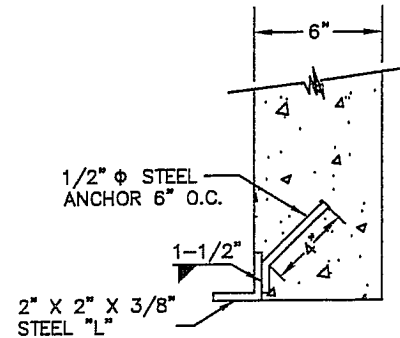
SECTION D-D



SECTION E-E



DETAIL B



DETAIL C

NOTES:

- 1- ALL REBAR SHALL HAVE 2" MIN. CLEAR.
- 2- STEEL LID SHALL BE FLUSH WITH CONCRETE.
- 3- BOX DIMENSIONS BASED UPON INLET PIPE SIZE "D".
- 4- ALL STEEL SHALL BE GRADE 60.
- 5- LID FOR CLEANOUT BOX SHALL HAVE 1-4 INCH X 1" SLOT FOR LIFTING. LID MAY BE SMOOTH OR DIAMOND PLATE STEEL.
- 6- SIDEWALK LID SHALL BE DIAMOND PLATE STEEL.
- 7- STANDARD REBAR SHALL NOT BE USED FOR STEEL ANCHORS.
- 8- ALL EXTERIOR EDGES OF CLEANOUT BOX TO HAVE 3/4" TO 1" CHAMFER (NOT SHOWN IN DETAILS FOR CLARITY).
- 9- STEEL LIDS AND SEAT TO BE PAINTED GREY IN ACCORDANCE WITH CITY STANDARDS.

MARK	DIMENSION (INCHES)				COMMENTS
	B	C	D	E	
B	10	15	20	30*	INSIDE WIDTH
C	20	22	24	27	CLEANOUT BOX HEIGHT
D	≤8	10	12	15	INLET PIPE
E	22	27	32	42	BOX WIDTH
K	18	23	28	38	STEEL END SUPPORT

DIMENSION TABLE

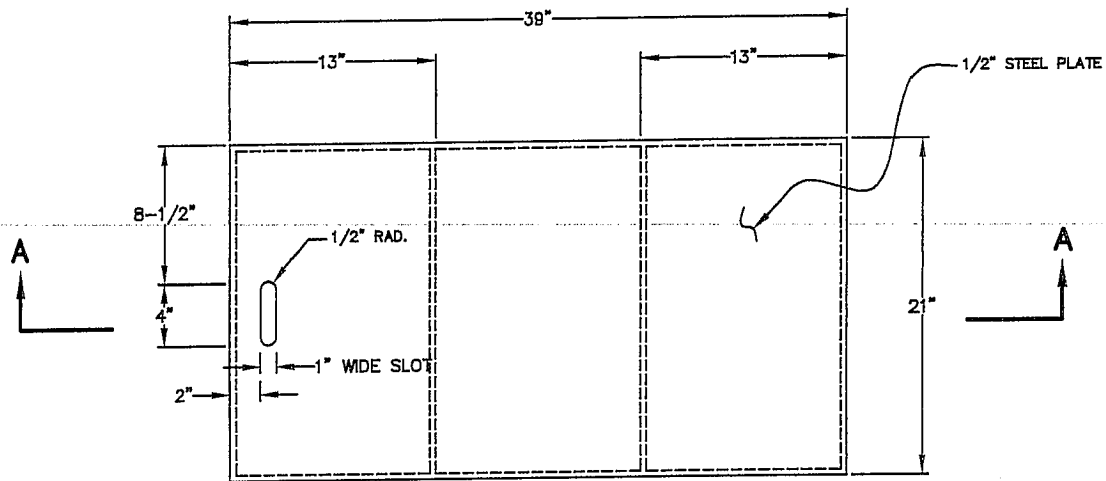
*REQUIRES ENGINEERED DESIGN FOR LID & BOX.

CITY OF ST. GEORGE ENGINEERING DEPARTMENT

REVISIONS		
DATE	DESCRIPTION	BY

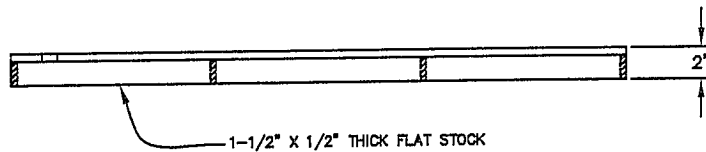
SIDEWALK DRAINAGE STRUCTURE

STANDARD DWG. NO.	
204	2 OF 2
APPROVED:	
DATE:	BY: LBB



NOTES:

- 1- FINISH SHALL BE ONE COAT PRIMER, ONE FINISH COAT, LIGHT GRAY ENAMEL.
- 2- LID SHALL BE ALL WELDED CONSTRUCTION.
- 3- FOR USE IN NON-TRAFFIC INSTALLATIONS.
- 4- LID SHALL BE DIAMOND PLATE STEEL.



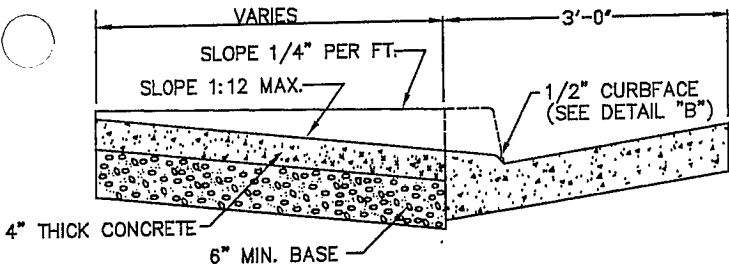
SECTION A-A

CITY OF ST. GEORGE ENGINEERING DEPARTMENT

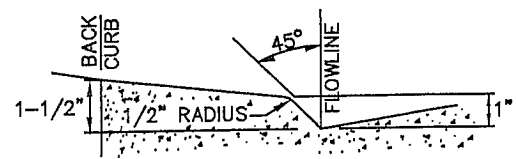
REVISIONS		
DATE	DESCRIPTION	BY

39" SOLID LID DETAILS

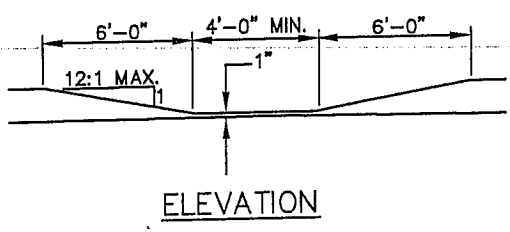
STANDARD DWG. NO.	
203	1 OF 2
APPROVED:	
DATE:	BY: LBB



SECTION A-A



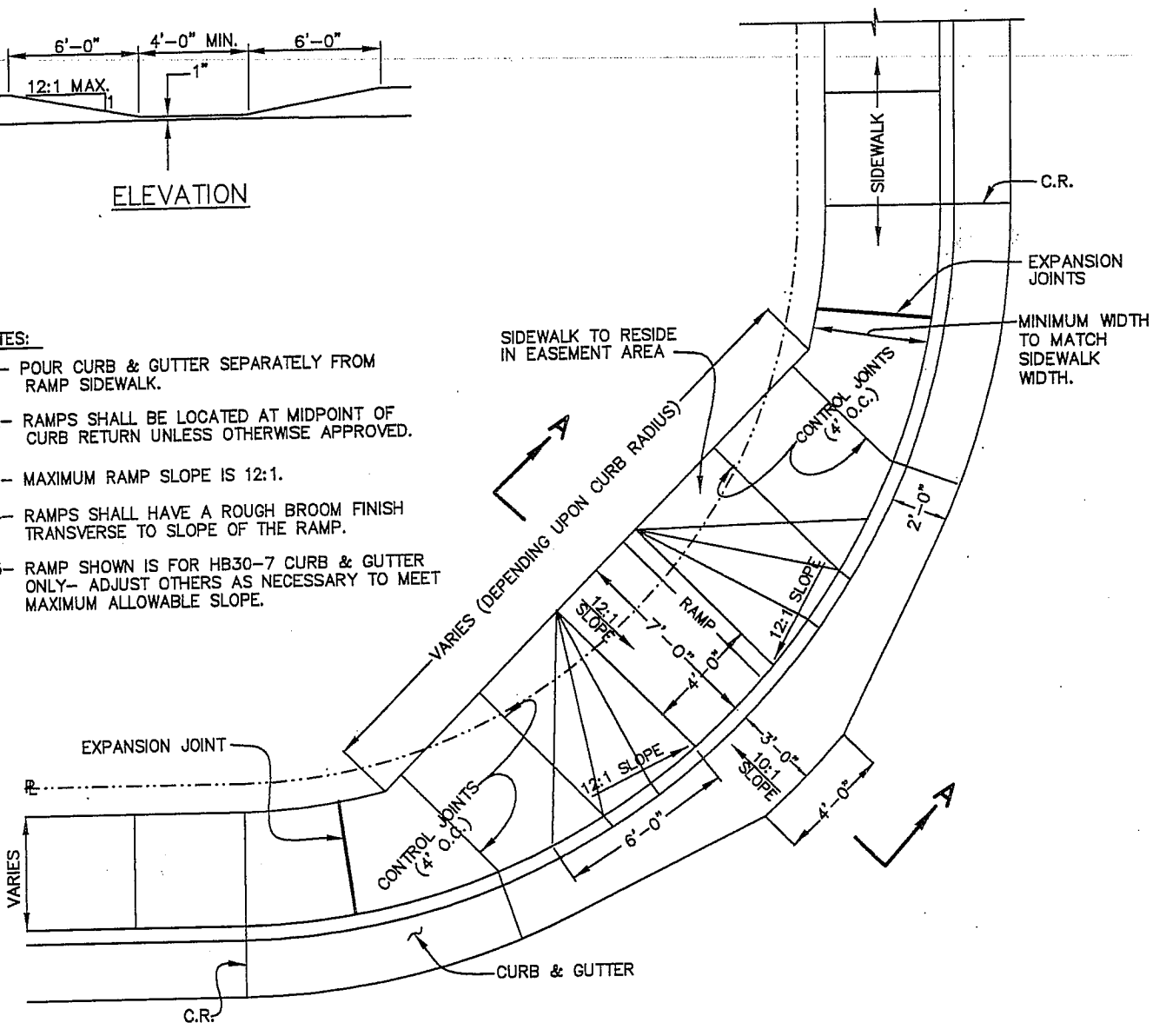
CURBFACE DETAIL B



ELEVATION

NOTES:

- 1- POUR CURB & GUTTER SEPARATELY FROM RAMP SIDEWALK.
- 2- RAMPS SHALL BE LOCATED AT MIDPOINT OF CURB RETURN UNLESS OTHERWISE APPROVED.
- 3- MAXIMUM RAMP SLOPE IS 12:1.
- 4- RAMPS SHALL HAVE A ROUGH BROOM FINISH TRANSVERSE TO SLOPE OF THE RAMP.
- 5- RAMP SHOWN IS FOR HB30-7 CURB & GUTTER ONLY- ADJUST OTHERS AS NECESSARY TO MEET MAXIMUM ALLOWABLE SLOPE.



CITY OF ST. GEORGE ENGINEERING DEPARTMENT

HANDICAP RAMP
DETAILS

STANDARD DWG. NO.

121 | 1 OF 1

APPROVED:

DATE: | BY: LBB

REVISIONS	DATE	DESCRIPTION	BY