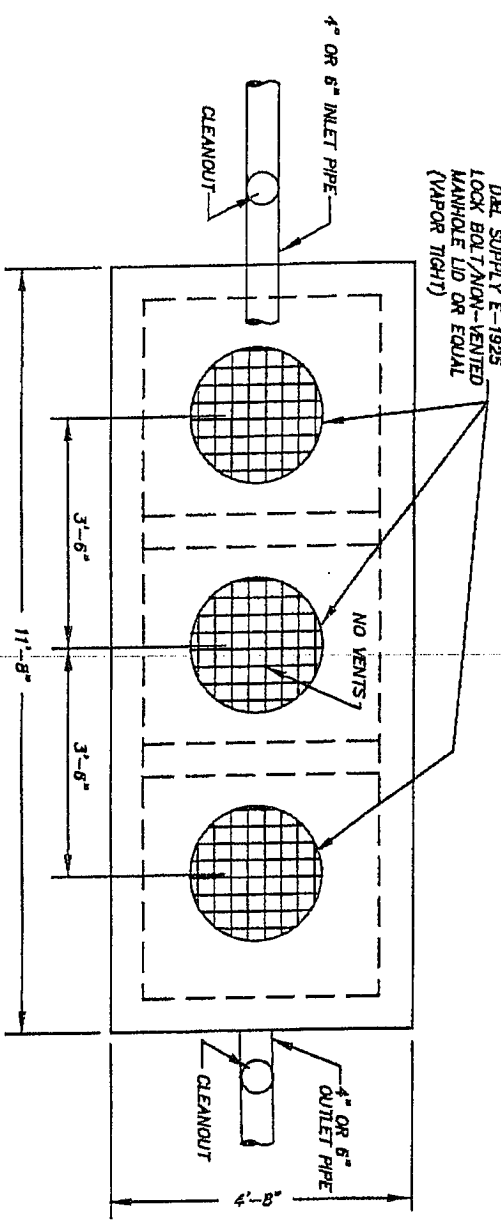
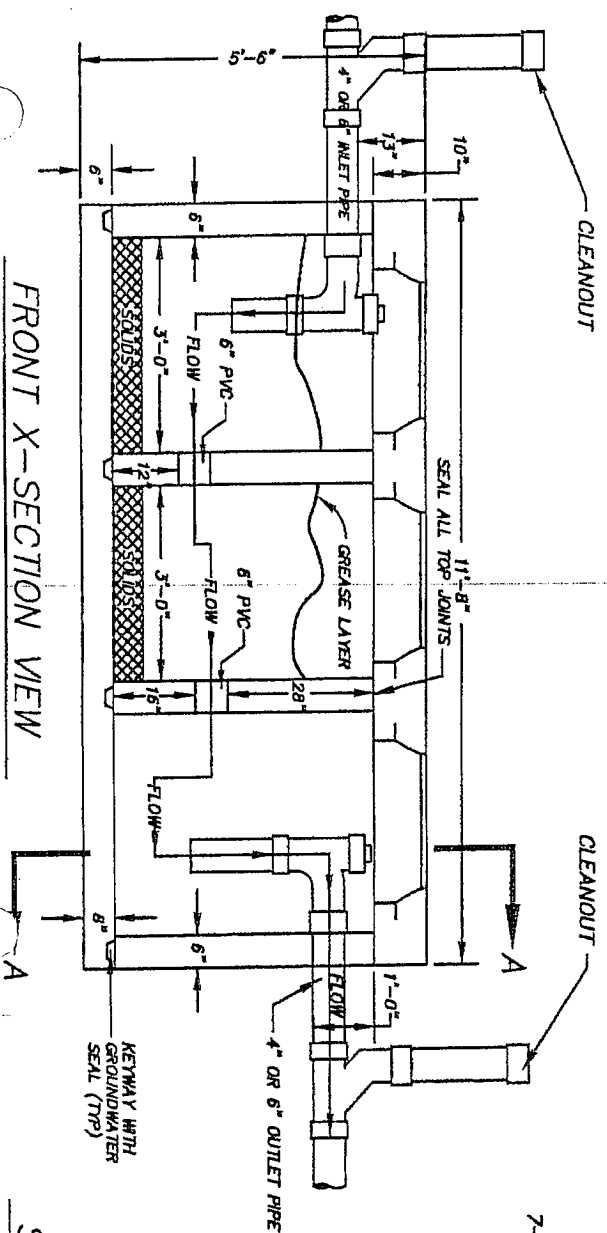


SAINT GEORGE REGION STANDARD GREASE/SAND INTERCEPTOR

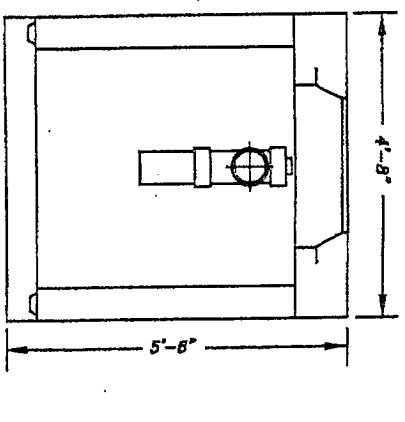
24-3/4" DIA.
D.M. SUPPLY E-1925
LOCK BOLT/MID-VENTED
MANHOLE LID OR EQUAL
(VAPOR TIGHT)



TOP VIEW



FRONT X-SECTION VIEW



SIDE X-SECTION A-A

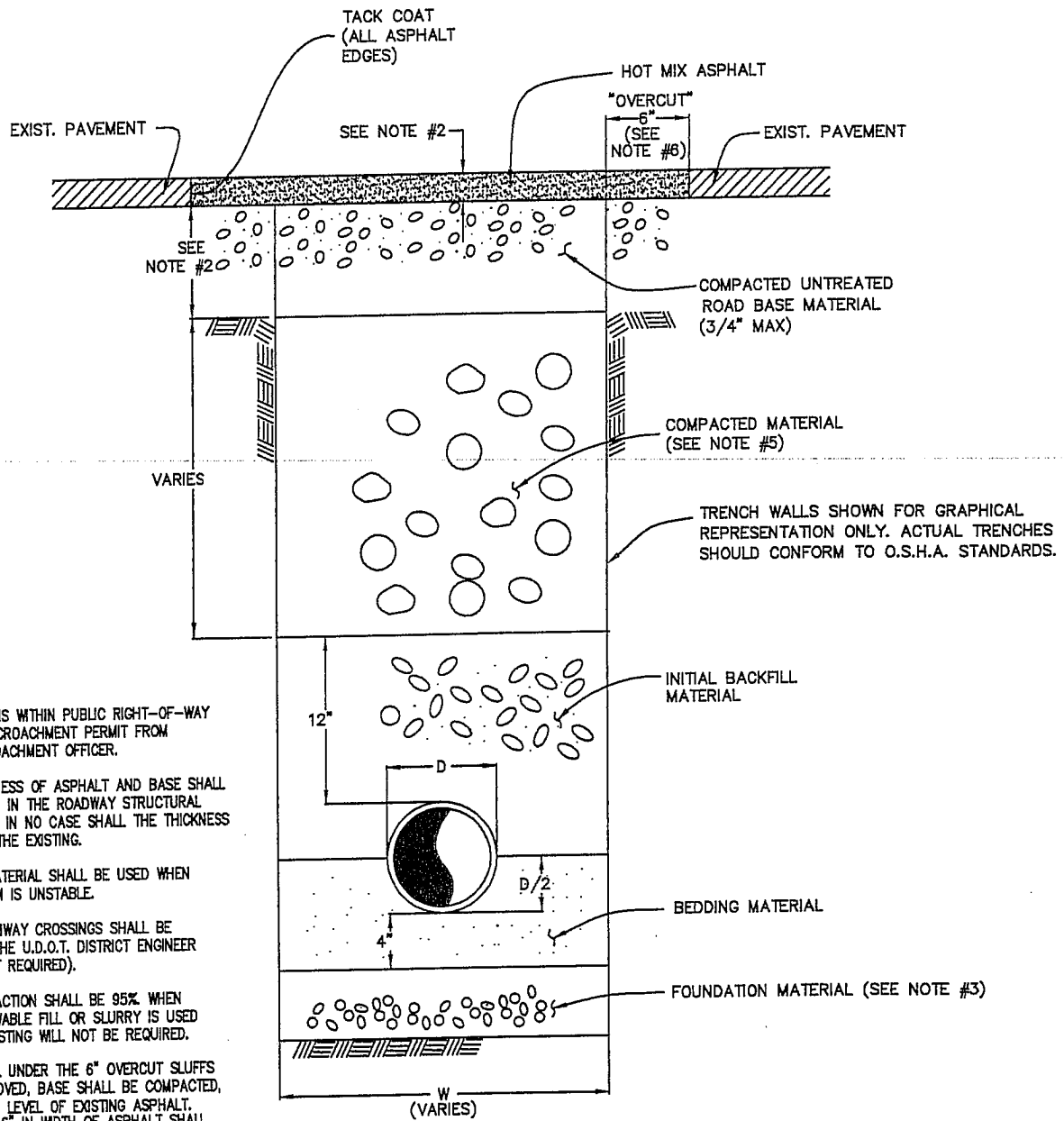
- NOTES:**
- 1- MATERIAL SPEC'S:
 - A. CONCRETE PORTLAND CEMENT TYPE II, MINIMUM COMPRESSIVE STRENGTH=3000 PSI AT 28 DAYS.
 - B. REINFORCING BAR INTERMEDIATE GRADE ASTM A615.
 - C. REINFORCING WELDED WIRE MESH ASTM A195
 - 2- UNIT COATED OUTSIDE WITH AN APPROVED PROTECTIVE COATING.
 - 3- ALL DIMENSIONS +/- NOT TO BE USED FOR CONSTRUCTION PURPOSES UNLESS CERTIFIED.
 - 4- PRECAST UNIT TO BE PLACED ON NATURAL SOIL OR APPROVED COMPACTED FILL.
 - 5- STANDARD GROUND WATER SEAL- BUTYL ROPE MASTIC OR CEMENT MORTAR.
 - 6- PRIOR TO BACKFILLING, INTERCEPTOR SHALL BE TESTED. TANK SHALL BE EXPOSED ON ALL SIDES AND FILLED WITH WATER AND SHALL HOLD WATER FOR A MINIMUM TEST PERIOD OF TWO HOURS.
 - 7- CLEANOUT SIZE TO MATCH INLET/OUTLET SIZE.

CITY OF ST. GEORGE ENGINEERING DEPARTMENT

GREASE/SAND INTERCEPTOR DETAILS

STANDARD DWG. NO.	
234	1 OF 1
APPROVED: <i>[Signature]</i>	
DATE: 9/04	BY: LBB

NO.	REVISIONS DESCRIPTION	BY



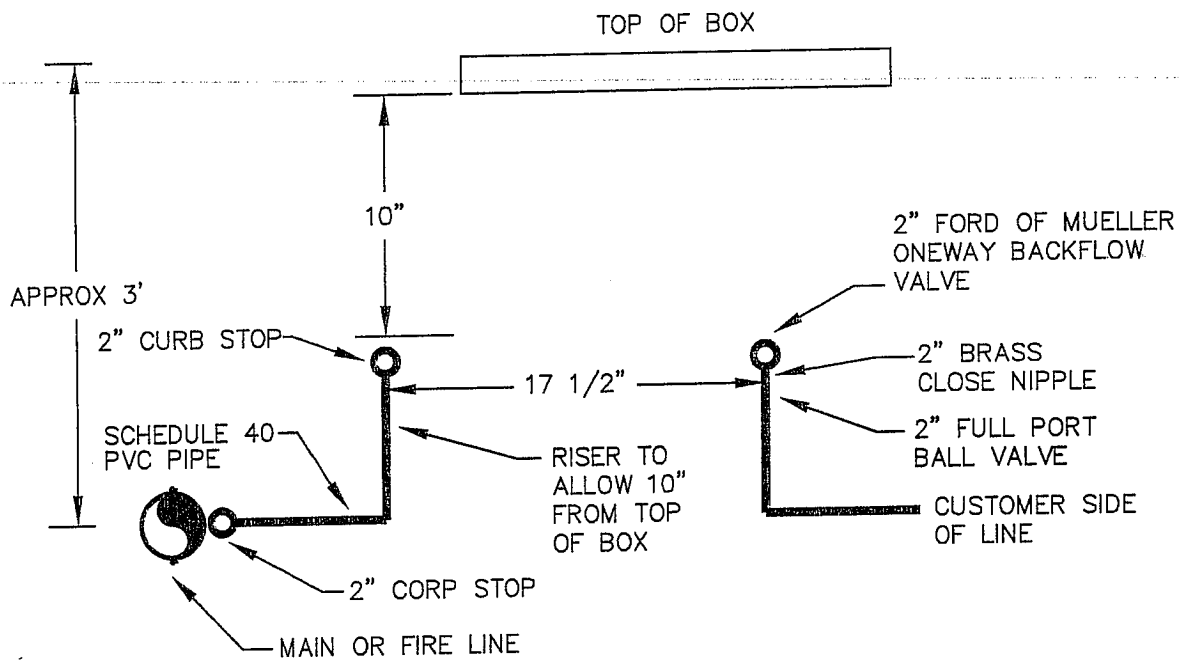
- NOTES:
- 1- ALL EXCAVATIONS WITHIN PUBLIC RIGHT-OF-WAY REQUIRE AN ENCROACHMENT PERMIT FROM THE CITY ENCROACHMENT OFFICER.
 - 2- MINIMUM THICKNESS OF ASPHALT AND BASE SHALL BE AS OUTLINED IN THE ROADWAY STRUCTURAL REQUIREMENTS. IN NO CASE SHALL THE THICKNESS BE LESS THAN THE EXISTING.
 - 3- FOUNDATION MATERIAL SHALL BE USED WHEN TRENCH BOTTOM IS UNSTABLE.
 - 4- ALL STATE HIGHWAY CROSSINGS SHALL BE APPROVED BY THE U.D.O.T. DISTRICT ENGINEER (U.D.O.T. PERMIT REQUIRED).
 - 5- MINIMUM COMPACTION SHALL BE 95%. WHEN APPROVED FLOWABLE FILL OR SLURRY IS USED COMPACTION TESTING WILL NOT BE REQUIRED.
 - 6- WHEN MATERIAL UNDER THE 6" OVERCUT SLUFFS OFF OR IS REMOVED, BASE SHALL BE COMPACTED, TO THE BOTTOM LEVEL OF EXISTING ASPHALT. AN ADDITIONAL 6" IN WIDTH OF ASPHALT SHALL BE CUT, REMOVED AND REPLACED AS PART OF THE OVERALL PATCH.
 - 7- WHERE ROAD SECTION HAS A DESIGNED GRANULAR SUB-BASE, IT SHALL BE REPLACED IN KIND OR WITH ROAD BASE GRAVEL.
 - 8- IN GENERAL, STREET SURFACES LESS THAN 24 MONTHS OLD WILL NOT BE CUT IF A CUT MUST BE MADE, ADDITIONAL, STRICTER REQUIREMENTS MAY BE INVOKED. SEE ENCROACHMENT OFFICER.
 - 9- 24 HOUR NOTICE REQUIRED ON ALL INSPECTIONS.
 - 10- ALL TRENCH BACKFILL SHALL MEET MIN. COMPACTION REQUIREMENTS.
 - 11- EXCLUDING EMERGENCY CLOSURES ALL ROAD CLOSURES AND DETOURS REQUIRE 48 HOURS PRIOR NOTICE.

CITY OF ST. GEORGE ENGINEERING DEPARTMENT

REVISIONS		
DATE	DESCRIPTION	BY

TRENCH BACKFILL AND REPAIR DETAIL

STANDARD DWG. NO.	
170	1 OF 1
APPROVED:	
DATE:	BY: LBB



NOTES:

- 1- ALL FITTINGS SHALL BE SCHEDULE 80.
- 2- AS AN OPTION, A 2" SOLID SETTER WITH A 2" BRASS FULL PORT BALL VALVE MAY BE USED.

CITY OF ST. GEORGE ENGINEERING DEPARTMENT

REVISIONS		
DATE	DESCRIPTION	BY

**2" METER MECHANICAL PIPING
DETAIL**

STANDARD DWG. NO.	
313	1 OF 1
APPROVED:	
DATE:	BY: LBB