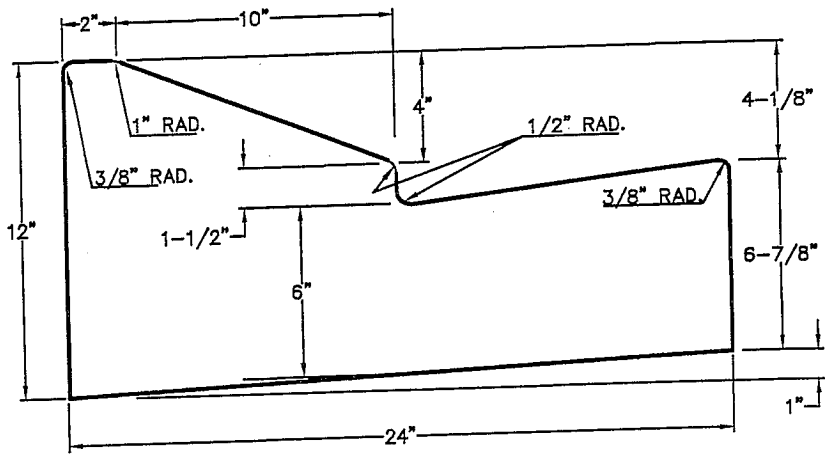


RU30

- NOTES:
- 1- ALL CONSTRUCTION & MATERIALS SHALL CONFORM TO CITY STANDARDS.
 - 2- RU30 FOR USE ON CERTAIN RURAL COLLECTOR ROADS ONLY & SHALL BE APPROVED BY THE CITY ENGINEER PRIOR TO ITS USE.
 - 3- PR24 FOR USE IN PRIVATE DEVELOPMENTS ON PRIVATE ROADS ONLY.



PR24
(PRIVATE DEVELOPMENTS ONLY)

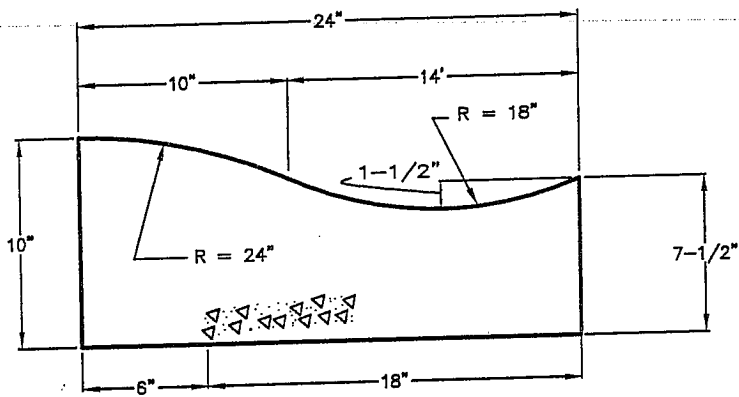
CITY OF ST. GEORGE ENGINEERING DEPARTMENT

CONCRETE CURB & GUTTER
(RU30 & PR24)

STANDARD DWG. NO.
101 | 1 OF 1

APPROVED:
DATE: 6/10/96 | BY: LBB

| REVISIONS | | |
|-----------|-------------|----|
| DATE | DESCRIPTION | BY |
| | | |
| | | |
| | | |



**STANDARD ROLL CURB & GUTTER
TYPE RN24**

(FOR USE IN MOBILE HOME DEVELOPMENTS ONLY)

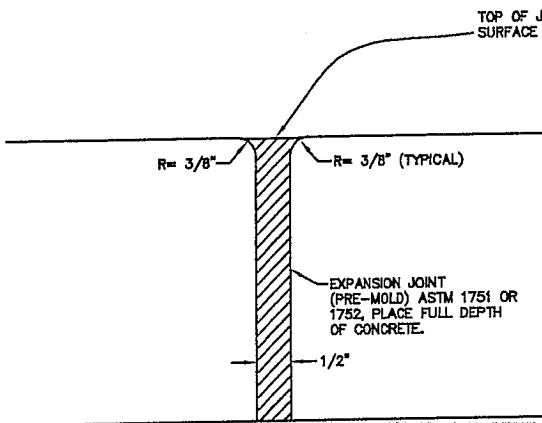
NOTES:
1- ALL CONCRETE TO BE
CLASS "A" CONCRETE.

CITY OF ST. GEORGE ENGINEERING DEPARTMENT

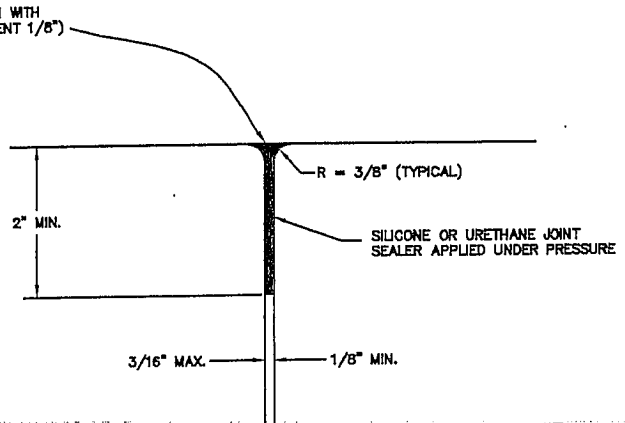
**STANDARD ROLL CURB & GUTTER
DETAILS**

STANDARD DWG. NO.
102 1 OF 1
APPROVED:
DATE: BY: LBB

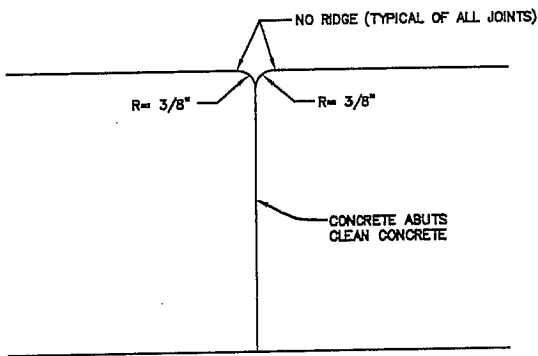
| REVISIONS | | |
|-----------|-------------|----|
| DATE | DESCRIPTION | BY |
| | | |
| | | |
| | | |



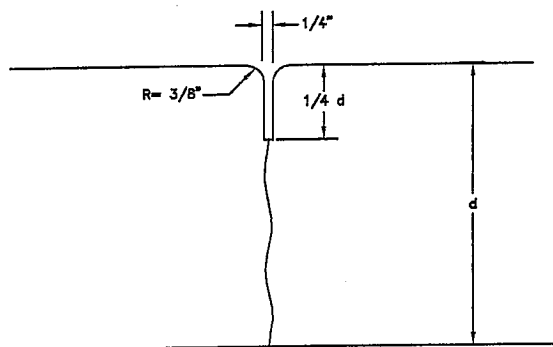
EXPANSION JOINT



FORM PLATE JOINT



COLD JOINT



CONTROL JOINT

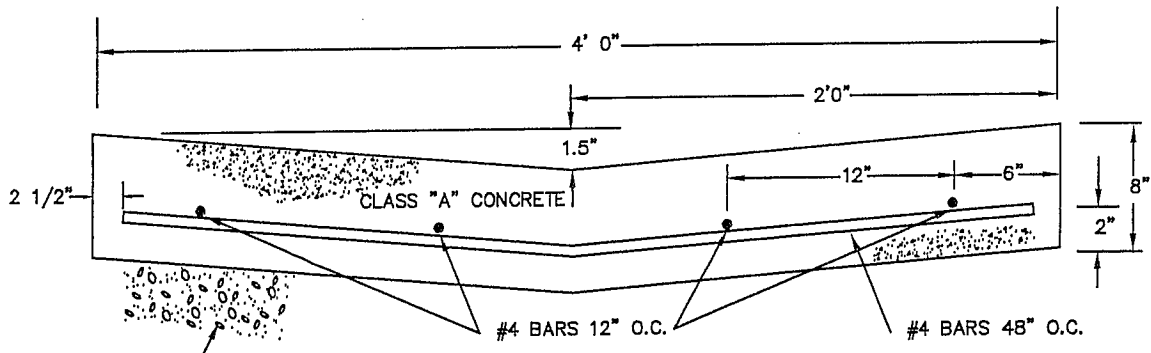
CITY OF ST. GEORGE ENGINEERING DEPARTMENT

STANDARD CONCRETE JOINT
DETAILS

| REVISIONS | | |
|-----------|-------------|----|
| DATE | DESCRIPTION | BY |
| | | |
| | | |
| | | |

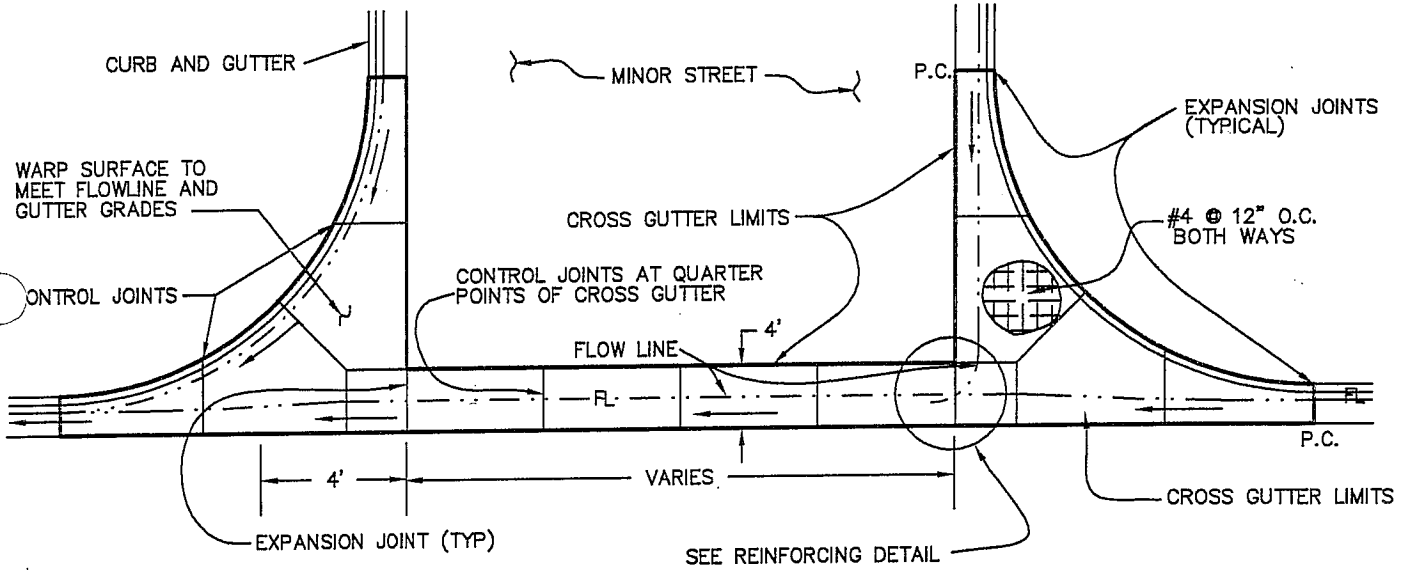
| | |
|-------------------|---------|
| STANDARD DWG. NO. | |
| 122 | 1 OF 1 |
| APPROVED: | |
| DATE: | BY: LBB |

Road



4' CROSS SECTION

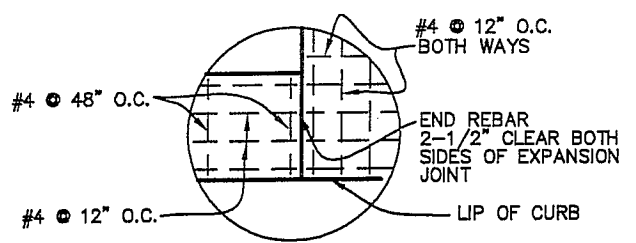
UNTREATED ROAD BASE
THICKNESS AS REQUIRED
(8" MIN.) COMPACTED TO 95%



PLAN

NOTES:

- 1- FOR USE ON RESIDENTIAL STREETS ONLY.
- 2- CROSS GUTTERS ARE USED AT INTERSECTIONS ONLY UNLESS OTHERWISE APPROVED.
- 3- CROSS GUTTER SHALL CROSS THE MINOR STREET.
- 4- ALL REINFORCING STEEL SHALL HAVE 2-INCH MINIMUM CLEAR COVER, SUPPORT CHAIRS, BLOCKS OR OTHER APPROVED EQUAL SHALL BE USED TO RAISE STEEL OFF GROUND.
- 5- REINFORCING TO EXTEND TO LIMITS OF CROSS GUTTER.
- 6- ALL REINFORCING STEEL SHALL BE GRADE 60 ASTM A 615.



REINFORCING DETAIL

CITY OF ST. GEORGE ENGINEERING DEPARTMENT

| REVISIONS | | |
|-----------|-------------|----|
| DATE | DESCRIPTION | BY |
| | | |
| | | |
| | | |

STANDARD 4' CROSS GUTTER

| | |
|-------------------|---------|
| STANDARD DWG. NO. | |
| 150 | 1 OF 1 |
| APPROVED: | |
| DATE: | BY: LBB |

